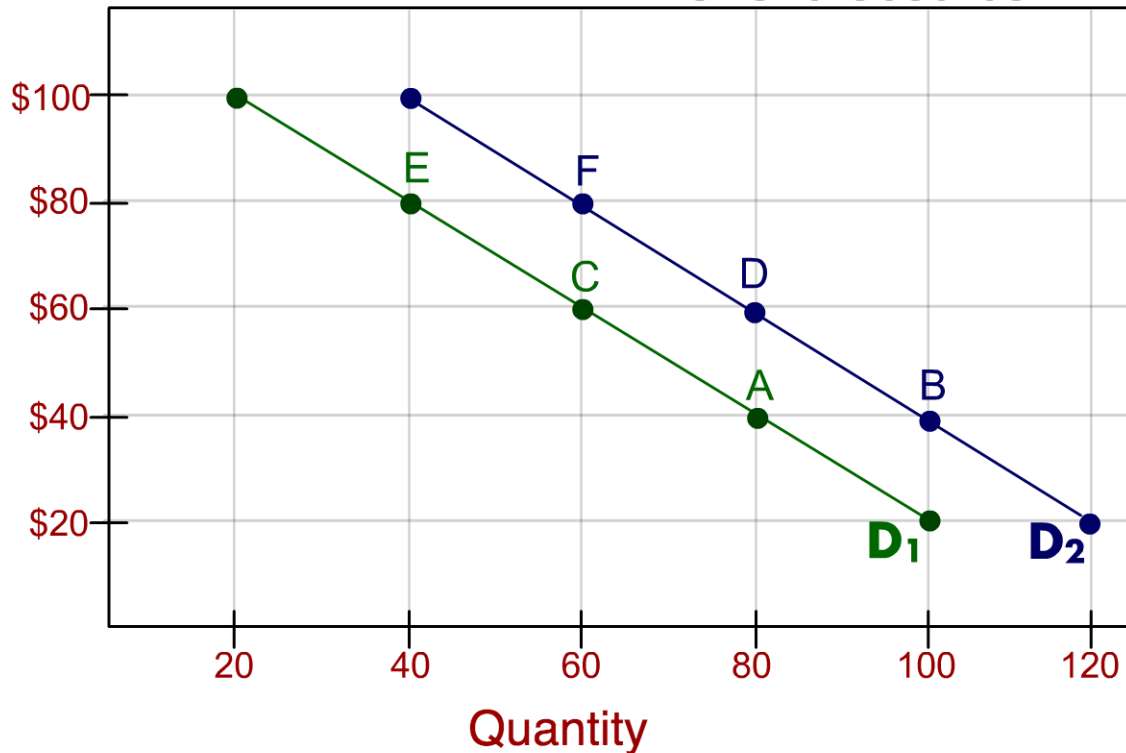


# DemandGraph for Skateboards



1. What quantity of skateboards is demanded at point A?

[check answer](#)

At point B?

[check answer](#)

2. What quantity of skateboards is demanded at point C?

[check answer](#)

At point D?

[check answer](#)

3. What quantity of skateboards is demanded at point E?

[check answer](#)

At point F?

[check answer](#)

Movement along demand curve D<sub>1</sub> from point A to point C results in a decrease in quantity demanded.

Movement along demand curve D<sub>2</sub> from point B to point D results in a decrease in quantity demanded.

What is the difference between demand curve D<sub>1</sub> and D<sub>2</sub>?

[check answer](#)